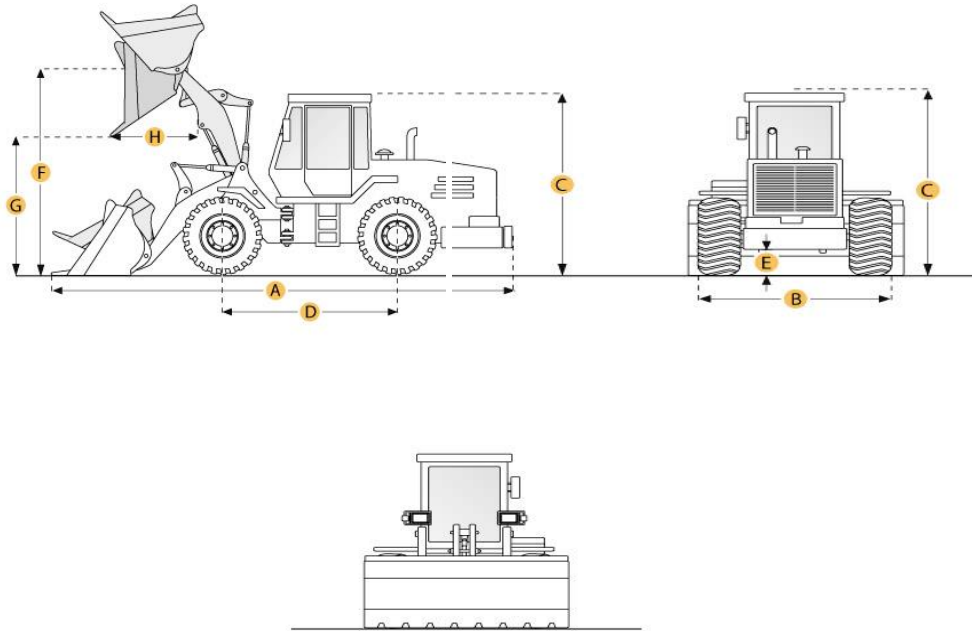


KOMATSU WA500-3 Wheel Loader



Selected Dimensions

Bucket

G. Dump Clearance at Max Raise	10.5 ft in	3195 mm
--------------------------------	------------	---------

Dimensions

A. Length with Bucket on Ground	30.2 ft in	9197 mm
B. Width Over Tires	10.5 ft in	3190 mm
C. Height to Top of Cab	12.7 ft in	3860 mm
D. Wheelbase	11.8 ft in	3600 mm
E. Ground Clearance	1.5 ft in	450 mm
F. Hinge Pin - Max Height	14.8 ft in	4496 mm
H. Reach at Max Lift and Dump	4.3 ft in	1323 mm

Specification

Engine

Make	Komatsu
Model	SAD140E

Gross Power	315 hp	234.9 kw
Power Measured @	2100 rpm	
Displacement	927.6 cu in	15.2 L
Number of Cylinders	6	
Aspiration	Turbocharged	

Operational

Operating Weight	64970.2 lb	29470 kg
Fuel Capacity	121.5 gal	460 L
Hydraulic System Fluid Capacity	46.2 gal	175 L
Engine Oil Fluid Capacity	9.8 gal	37 L
Cooling System Fluid Capacity	26.2 gal	99 L
Transmission Fluid Capacity	16.4 gal	62 L
Front Axle/Diff Fluid Capacity	20.6 gal	78 L
Rear Axle/Diff Fluid Capacity	20.6 gal	78 L
Static Tipping Weight	51588.2 lb	23400 kg
Turning Radius	21.4 ft in	6530 mm
Operating Voltage	24 V	
Alternator Supplied Amperage	50 amps	
Rear Axle Oscillation	30 degrees	
Tire Size	26.5 - 25	

Transmission

Type	powershift, planetary gear type	
Number of Forward Gears	4	
Number of Reverse Gears	4	
Max Speed - Forward	20.5 mph	33 km/h
Max Speed - Reverse	22.4 mph	36.1 km/h

Hydraulic System

Pump Type	gear pump	
Relief Valve Pressure	3045.8 psi	21000 kPa
Pump Flow Capacity	91.9 gal/min	348 L/min
Raise Time	6.4 sec	
Dump Time	1.7 sec	
Lower Time	3.5 sec	

Bucket

Breakout Force	55752.6 lb	248 kN
Dump Clearance at Max Raise	10.5 ft in	3195 mm
Bucket Width	11.4 ft in	3460 mm
Bucket Capacity - heaped	6.5 yd3	5 m3

Dimensions

Length with Bucket on Ground	30.2 ft in	9197 mm
Width Over Tires	10.5 ft in	3190 mm
Height to Top of Cab	12.7 ft in	3860 mm
Ground Clearance	1.5 ft in	450 mm
Wheelbase	11.8 ft in	3600 mm
Hinge Pin - Max Height	14.8 ft in	4496 mm
Reach at Max Lift and Dump	4.3 ft in	1323 mm

New & Used Heavy Equipment