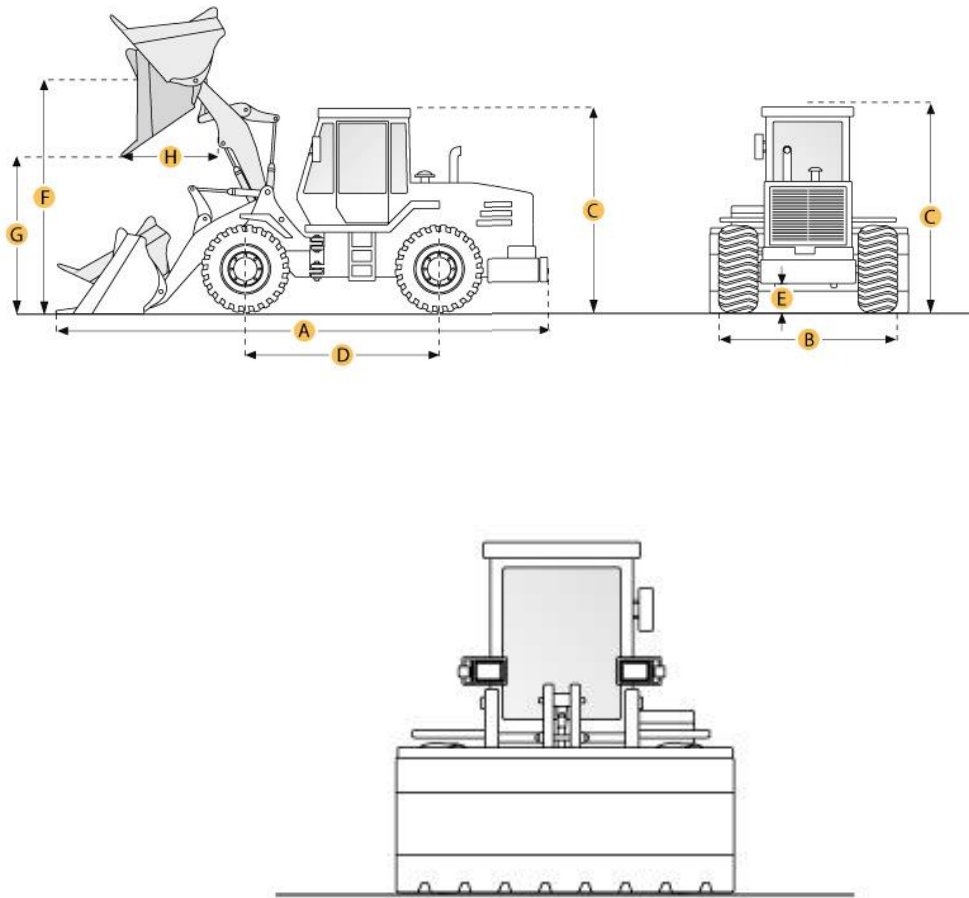


Komatsu WA200-3 Wheel Loader



Selected Dimensions

Bucket

G. Dump Clearance at Max Raise 9.3 ft in 2830 mm

Dimensions

A. Length with Bucket on Ground	22.6 ft in	6895 mm
B. Width Over Tires	8.1 ft in	2470 mm
C. Height to Top of Cab	10.4 ft in	3180 mm
D. Wheelbase	9.3 ft in	2840 mm
E. Ground Clearance	1.7 ft in	495 mm
F. Hinge Pin - Max Height	12.2 ft in	3705 mm

Specification

Engine

Make	Komatsu	
Model	S6D95L	
Net Power	126 hp	94 kw
Gross Power	128 hp	95.2 kw
Power Measured @	2000 rpm	
Displacement	272 cu in	4.5 L
Number of Cylinders	4	
Aspiration	Turbo-charged	

Operational

Operating Weight	23259 lb	10550 kg
Fuel Capacity	46.8 gal	177 L
Hydraulic System Fluid Capacity	15.3 gal	58 L
Engine Oil Fluid Capacity	4.1 gal	15.5 L
Cooling System Fluid Capacity	4.5 gal	17 L
Front Axle/Diff Fluid Capacity	4.8 gal	18 L
Rear Axle/Diff Fluid Capacity	4.8 gal	18 L
Static Tipping Weight	21363 lb	9690 kg
Turning Radius	38.4 ft in	11700 mm

Transmission

Type	Hydrostatic, 1 pump, 2 motors with speed range select	
Number of Forward Gears	4	
Number of Reverse Gears	4	
Max Speed - Forward	23.6 mph	38 km/h
Max Speed - Reverse	23.6 mph	38 km/h

Hydraulic System

Pump Type	Gear type pump	
Relief Valve Pressure	3000 psi	20600 kPa
Pump Flow Capacity	22.5 gal/min	85 L/min
Raise Time	5.9 sec	
Dump Time	1.4 sec	
Lower Time	3.6 sec	

Bucket

Breakout Force	20944 lb	93.2 kN
Dump Clearance at Max Raise	9.3 ft in	2830 mm
Bucket Width	8.3 ft in	2550 mm
Bucket Capacity – heaped	2.6 yd ³	2 m ³
Bucket Capacity – struck	2.2 yd ³	1.7 m ³

Dimensions

Length with Bucket on Ground	22.6 ft in	6895 mm
Width Over Tires	8.1 ft in	2470 mm
Height to Top of Cab	10.4 ft in	3180 mm
Ground Clearance	1.7 ft in	495 mm
Wheelbase	9.3 ft in	2840 mm
Hinge Pin - Max Height	12.2 ft in	3705 mm

New & Used Heavy Equipment