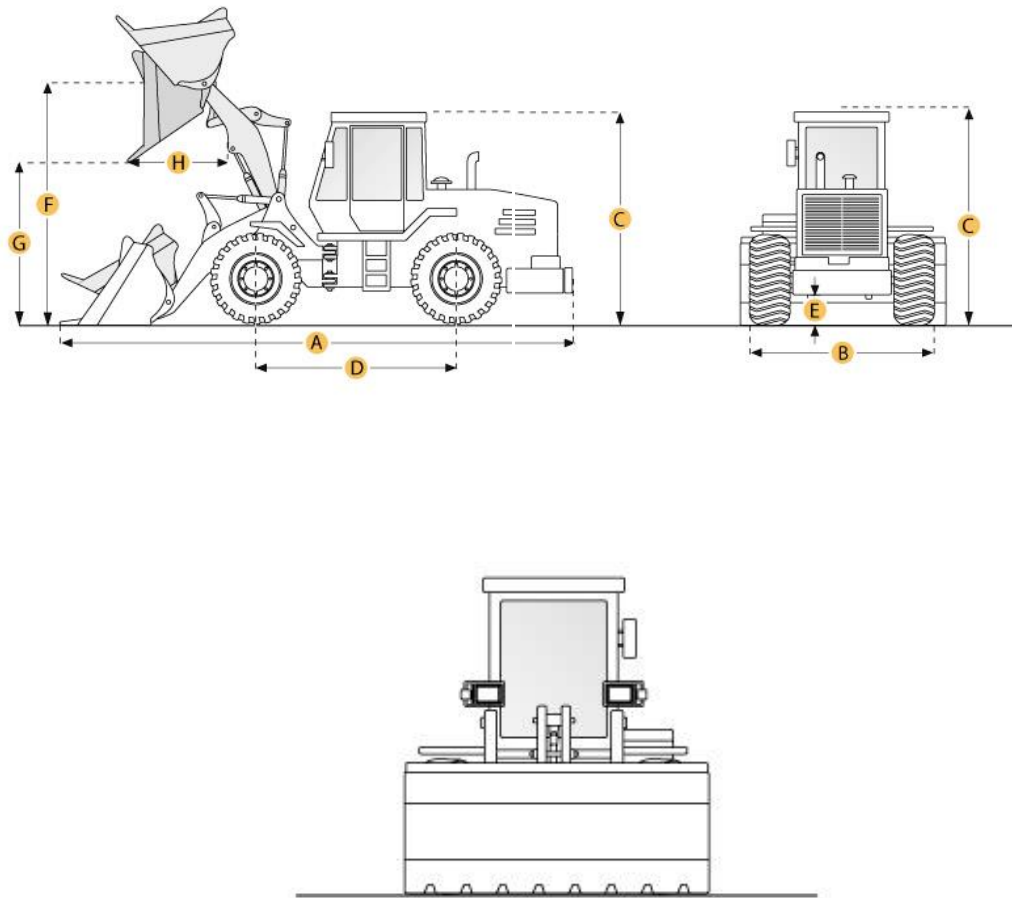


Komatsu WA150-3 Wheel Loader



Selected Dimensions

Bucket

G. Dump Clearance at Max Raise	8.9 ft in	2730 mm
--------------------------------	-----------	---------

Dimensions

A. Length with Bucket on Ground	20.7 ft in	6315 mm
B. Width Over Tires	7.3 ft in	2220 mm
C. Height to Top of Cab	10.1 ft in	3065 mm
D. Wheelbase	8.5 ft in	2600 mm
E. Ground Clearance	1.4 ft in	425 mm
F. Hinge Pin - Max Height	11.5 ft in	3500 mm
H. Reach at Max Lift and Dump	3.1 ft in	945 mm

Specification

Engine

Make	Komatsu	
Model	SA6D95L	
Gross Power	135 hp	101 kw
Power Measured @	2000 rpm	
Displacement	238 cu in	3.9 L
Torque Measured @	1300 rpm	
Max Torque	296.5 lb ft	402 Nm
Number of Cylinders	4	
Aspiration	turbocharged	

Operational

Operating Weight	18452.7 lb	8370 kg
Fuel Capacity	35.1 gal	133 L
Hydraulic System Fluid Capacity	1.2 gal	4.5 L
Engine Oil Fluid Capacity	3.3 gal	12.5 L
Cooling System Fluid Capacity	4.5 gal	17 L
Transmission Fluid Capacity	1.2 gal	4.4 L
Front Axle/Diff Fluid Capacity	3.7 gal	14 L
Rear Axle/Diff Fluid Capacity	3.8 gal	14.4 L
Static Tipping Weight	16270.1 lb	7380 kg
Turning Radius	15.5 ft in	4735 mm
Operating Voltage	24 V	
Alternator Supplied Amperage	60 amps	
Rear Axle Oscillation	30 degrees	
Tire Size	17.5R25	

Transmission

Type	hydrostatic transmission	
Number of Forward Gears	4	
Number of Reverse Gears	4	
Max Speed - Forward	24.2 mph	39 km/h
Max Speed - Reverse	24.2 mph	39 km/h

Hydraulic System

Pump Type	Gear	
Relief Valve Pressure	3045.8 psi	21000 kPa
Pump Flow Capacity	32.5 gal/min	123 L/min
Raise Time	5.8 sec	
Dump Time	1.1 sec	
Lower Time	3.6 sec	

Bucket

Breakout Force	1663586 lb	7400 kN
Dump Clearance at Max Raise	8.9 ft in	2730 mm
Bucket Width	7.9 ft in	2395 mm
Bucket Capacity - heaped	2 yd ³	1.5 m ³
Bucket Capacity - struck	1.6 yd ³	1.3 m ³

Dimensions

Length with Bucket on Ground	20.7 ft in	6315 mm
Width Over Tires	7.3 ft in	2220 mm
Height to Top of Cab	10.1 ft in	3065 mm
Ground Clearance	1.4 ft in	425 mm
Wheelbase	8.5 ft in	2600 mm
Hinge Pin - Max Height	11.5 ft in	3500 mm
Reach at Max Lift and Dump	3.1 ft in	945 mm

New & Used Heavy Equipment