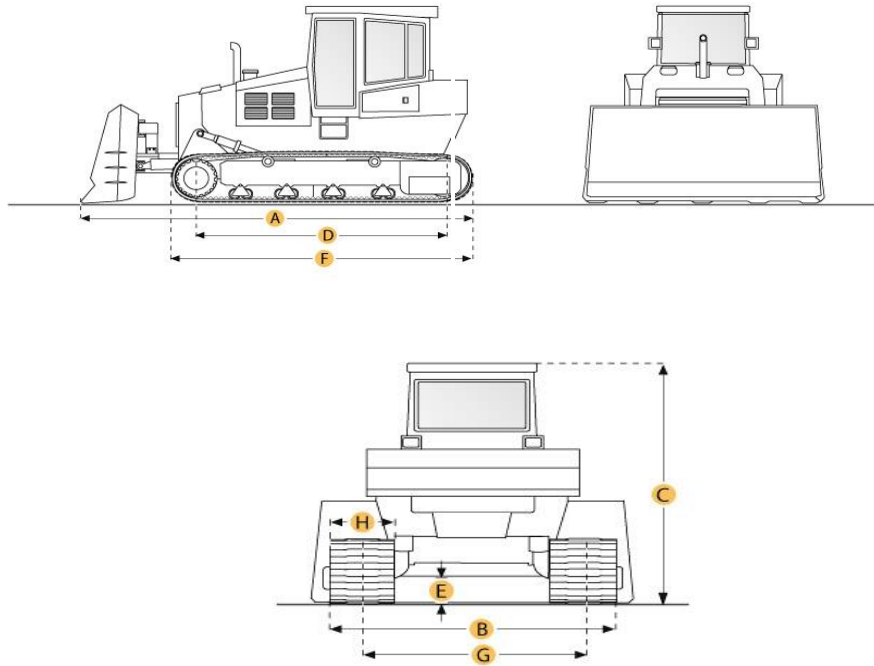


Komatsu D31P-20 Crawler Tractor



Selected Dimensions

Undercarriage

G. Track Gauge	4.8 ft in	1450 mm
H. Standard Shoe Size	23.6 in	600 mm

Specification

Engine

Make	Komatsu	
Model	S4D102E	
Net Power	70 hp	52.2 kw
Power Measured @	2350 rpm	
Displacement	238 cu in	3.9 L
Aspiration	Turbocharged	

Operational

Operating Weight	13657.6 lb	6195 kg
Fuel Capacity	30.4 gal	115 L

Cooling System Fluid Capacity	5.8 gal	22 L
Engine Oil Capacity	3.7 gal	14 L
Power Train Fluid Capacity	3.4 gal	13 L
Final Drives Fluid Capacity	2.5 gal	9.5 L

Transmission

Type	Hydroshift	
Number of Forward Gears	3	
Number of Reverse Gears	3	
Max Speed - Forward	4 mph	6.5 km/h
Max Speed - Reverse	4.4 mph	7.1 km/h

Undercarriage

Ground Pressure	3.3 psi	22.6 kPa
Ground Contact Area	4064.1 in ²	2.6 m ²
Standard Shoe Size	23.6 in	600 mm
Number of Shoes per Side	41	
Number of Track Rollers per Side	6	
Track Gauge	4.8 ft in	1450 mm

Hydraulic System

Pump type	gear type	
Relief Valve Pressure	2494.7 psi	17200 kPa

New & Used Heavy Equipment