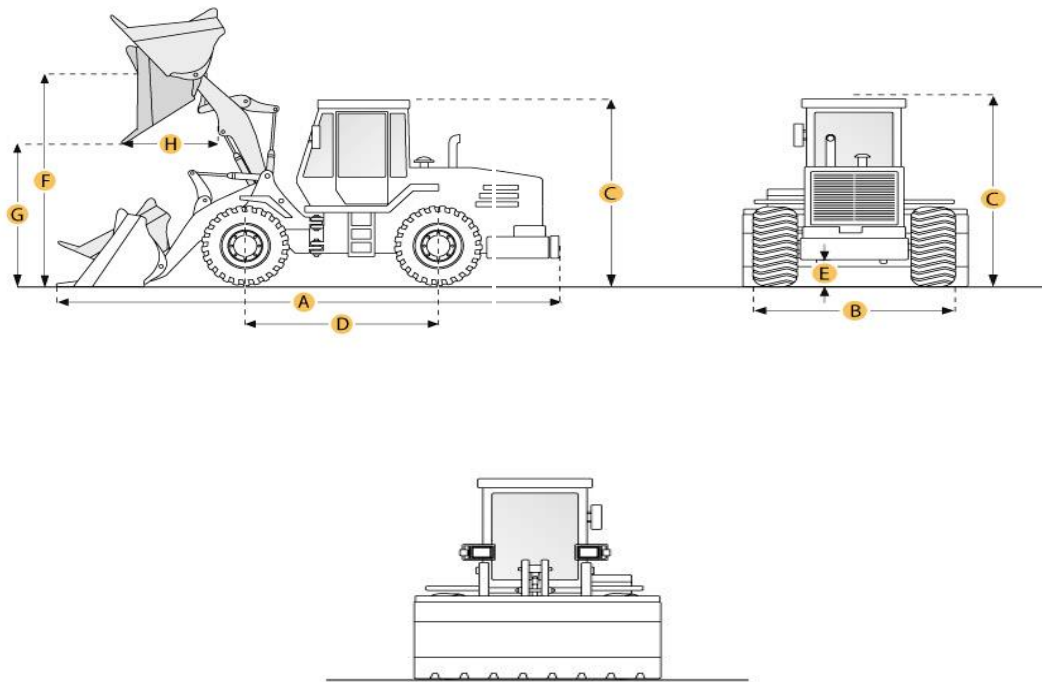


Caterpillar 966G Wheel Loader



Selected Dimensions

Bucket

G. Dump Clearance at Max Raise	10.2 ft in	3100 mm
--------------------------------	------------	---------

Dimensions

A. Length with Bucket on Ground	29 ft in	8825 mm
B. Width Over Tires	9.7 ft in	2960 mm
C. Height to Top of Cab	11.8 ft in	3590 mm
E. Ground Clearance	1.4 ft in	430 mm
H. Reach at Max Lift and Dump	4.3 ft in	1305 mm

Specification

Engine

Make	Caterpillar	
Model	3306DITA	
Net Power	253 hp	188.7 kw

Gross Power	235 hp	175.2 kw
Power Measured @	2200 rpm	
Displacement	640.7 cu in	10.5 L
Number of Cylinders	6	

Operational

Operating Weight	50155.2 lb	22750 kg
Fuel Capacity	108.3 gal	410 L
Hydraulic System Fluid Capacity	54.7 gal	207 L
Static Tipping Weight	34731.6 lb	15754 kg

Transmission

Number of Forward Gears	4	
Number of Reverse Gears	4	
Max Speed - Forward	23.2 mph	37.3 km/h
Max Speed - Reverse	26.3 mph	42.3 km/h

Hydraulic System

Raise Time	6.6 sec
Dump Time	1.3 sec
Lower Time	1.8 sec

Bucket

Breakout Force	44120 lb	kN
Dump Clearance at Max Raise	10.2 ft in	3100 mm
Bucket Width	10 ft in	3060 mm
Bucket Capacity - heaped	4.3 yd ³	3.3 m ³

Dimensions

Length with Bucket on Ground	29 ft in	8825 mm
Width Over Tires	9.7 ft in	2960 mm
Height to Top of Cab	11.8 ft in	3590 mm
Ground Clearance	1.4 ft in	430 mm
Reach at Max Lift and Dump	4.3 ft in	1305 mm

New & Used Heavy Equipment