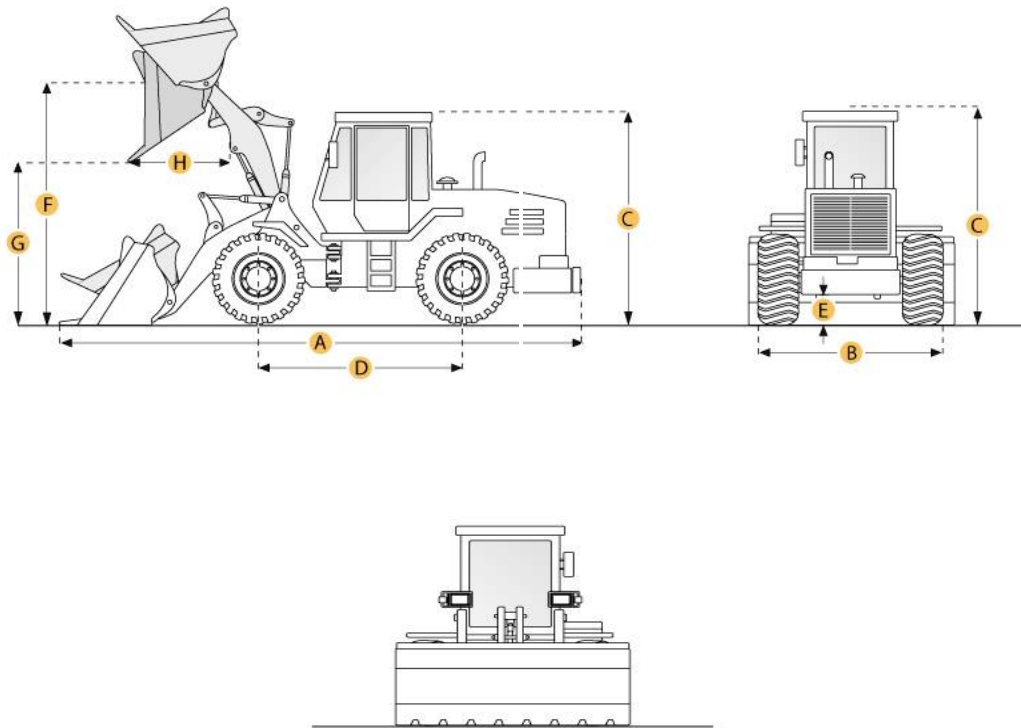


Caterpillar 950G Wheel Loader



Selected Dimensions

Bucket

| | | |
|--------------------------------|-----------|---------|
| G. Dump Clearance at Max Raise | 9.5 ft in | 2890 mm |
|--------------------------------|-----------|---------|

Dimensions

| | | |
|---------------------------------|------------|---------|
| A. Length with Bucket on Ground | 26.3 ft in | 8025 mm |
| B. Width Over Tires | 9.5 ft in | 2890 mm |
| C. Height to Top of Cab | 11.5 ft in | 3500 mm |
| E. Ground Clearance | 1.3 ft in | 400 mm |
| H. Reach at Max Lift and Dump | 4.2 ft in | 1270 mm |

Specification

Engine

| | | |
|--------------|-------------|----------|
| Model | 3126DITA | |
| Net Power | 197 hp | 146.9 kw |
| Gross Power | 180 hp | 134.2 kw |
| Displacement | 439.4 cu in | 7.2 L |
| Operational | | |

Operating Weight

| | | |
|---------------------------------|------------|----------|
| | 39202.6 lb | 17782 kg |
| Fuel Capacity | 77.9 gal | 295 L |
| Hydraulic System Fluid Capacity | 40.4 gal | 153 L |
| Static Tipping Weight | 26885.4 lb | 12195 kg |

Transmission

| | | |
|-------------------------|----------|-----------|
| Number of Forward Gears | 4 | |
| Number of Reverse Gears | 4 | |
| Max Speed - Forward | 23 mph | 37 km/h |
| Max Speed - Reverse | 25.2 mph | 40.5 km/h |

Hydraulic System

| | | |
|------------|---------|--|
| Raise Time | 6.3 sec | |
| Dump Time | 2.2 sec | |
| Lower Time | 2.2 sec | |

Bucket

| | | |
|-----------------------------|---------------------|--------------------|
| Breakout Force | 32810 lb | kN |
| Dump Clearance at Max Raise | 9.5 ft in | 2890 mm |
| Bucket Width | 9.6 ft in | 2930 mm |
| Bucket Capacity - heaped | 3.5 yd ³ | 2.7 m ³ |

Dimensions

| | | |
|------------------------------|------------|---------|
| Length with Bucket on Ground | 26.3 ft in | 8025 mm |
| Width Over Tires | 9.5 ft in | 2890 mm |
| Height to Top of Cab | 11.5 ft in | 3500 mm |
| Ground Clearance | 1.3 ft in | 400 mm |
| Reach at Max Lift and Dump | 4.2 ft in | 1270 mm |

New & Used Heavy Equipment

All About Heavy Equipment & Truck