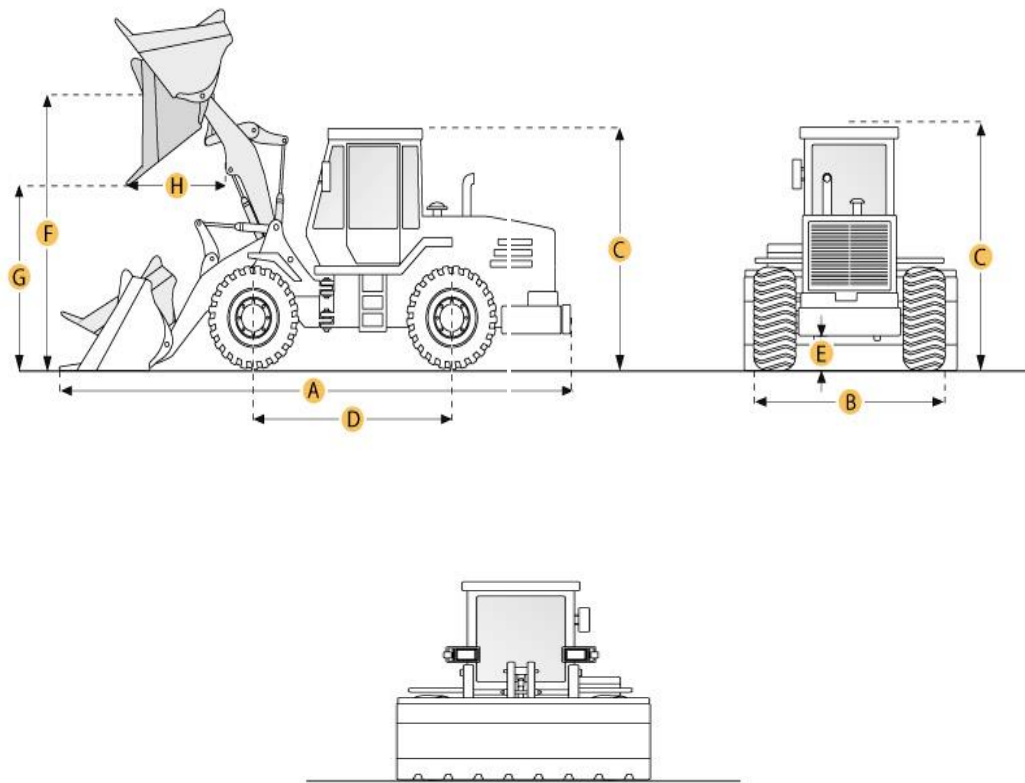


CATERPILLAR 926E Wheel Loader



Selected Dimensions

Bucket

G. Dump Clearance at Max Raise 9 ft in 2755 mm

Dimensions

A. Length with Bucket on Ground	21.8 ft in	6652 mm
B. Width Over Tires	7.6 ft in	2330 mm
C. Height to Top of Cab	10.5 ft in	3210 mm
D. Wheelbase	9.4 ft in	2870 mm
E. Ground Clearance	1.1 ft in	341 mm
F. Hinge Pin - Max Height	11.9 ft in	3640 mm
H. Reach at Max Lift and Dump	3.3 ft in	1003 mm

Specification

Engine

Make	Caterpillar	
Model	3204	
Gross Power	110 hp	82 kw
Displacement	317.3 cu in	5.2 L

Operational

Operating Weight	20794 lb	9432 kg
Fuel Capacity	39.6 gal	150 L
Hydraulic System Fluid Capacity	24.3 gal	92 L
Static Tipping Weight	14945.1 lb	6779 kg
Turning Radius	18.4 ft in	5600 mm
Tire Size	17.5-25 12PR	

Transmission

Number of Forward Gears	4	
Number of Reverse Gears	4	
Max Speed - Forward	21.3 mph	34.2 km/h
Max Speed - Reverse	22.9 mph	36.8 km/h

Hydraulic System

Raise Time	6 sec	
Dump Time	1.7 sec	
Lower Time	3.6 sec	

Bucket

Breakout Force	22143 lb	kN
Dump Clearance at Max Raise	9 ft in	2755 mm
Bucket Width	7.9 ft in	2395 mm
Bucket Capacity - heaped	2.2 yd ³	1.7 m ³
Bucket Capacity - struck	1.9 yd ³	1.5 m ³

Dimensions

Length with Bucket on Ground	21.8 ft in	6652 mm
Width Over Tires	7.6 ft in	2330 mm
Height to Top of Cab	10.5 ft in	3210 mm
Ground Clearance	1.1 ft in	341 mm

Wheelbase	9.4 ft in	2870 mm
Hinge Pin - Max Height	11.9 ft in	3640 mm
Reach at Max Lift and Dump	3.3 ft in	1003 mm

New & Used Heavy Equipment